

## XPression Maps Installation

The installation files need to be copied to the local file system prior to installation.

Installing the files from a shared network or removable media (USB/CD/DVD) will not properly copy the BMMAP4 and SRTM1 files, resulting in an installation that does not render the map/globe.

The XPression Maps components need to be installed in the following order:

1. XPression Maps
2. XPression Maps Database
3. XPression Maps Gateway

The following procedures will take you through the installation and launching of XPression Maps:

- “Installing XPression Maps” on page 1–2
- “Installing the XPression Maps Database” on page 1–6
- “Installing the XPression Maps Gateway” on page 1–10
- “Installing the XPression Maps License” on page 1–13
- “Launching XPression Maps” on page 1–13
- “Launching the XPression Maps HTML5 Client” on page 1–14
- “XPression Maps Port Requirements” on page 1–15

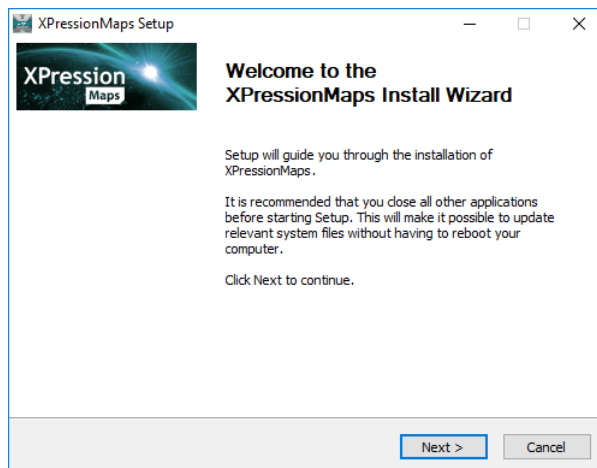
## Installing XPression Maps

Begin by installing the primary XPression Maps application.

### To install XPression Maps:

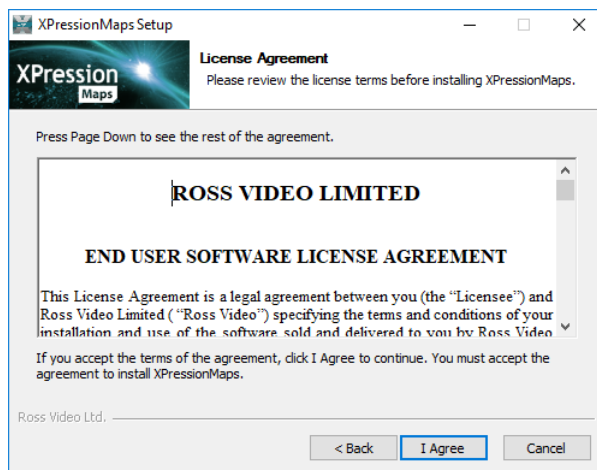
1. Open the folder where the installation files have been stored.
2. Double-click **XPressionMaps\_VX.X.X.XXXXX\_Installer.exe**.

The **XPression Maps Setup** wizard opens.



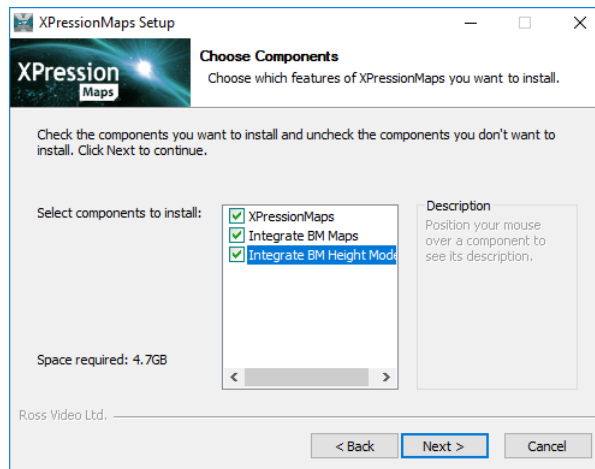
3. Click **Next**.

The **License Agreement** page opens.



4. Read the license agreement and click **I Agree**.

The **Choose Components** page opens.

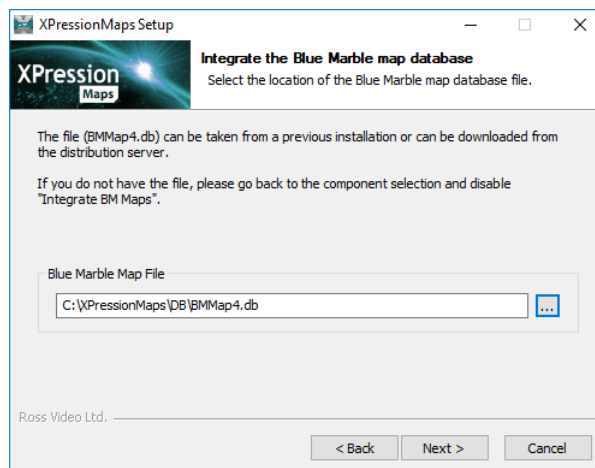


5. Ensure the following checkboxes are selected and then click **Next**.

- **XPressionMaps**
- **Integrate BM Maps**
- **Integrate BM Height Model**

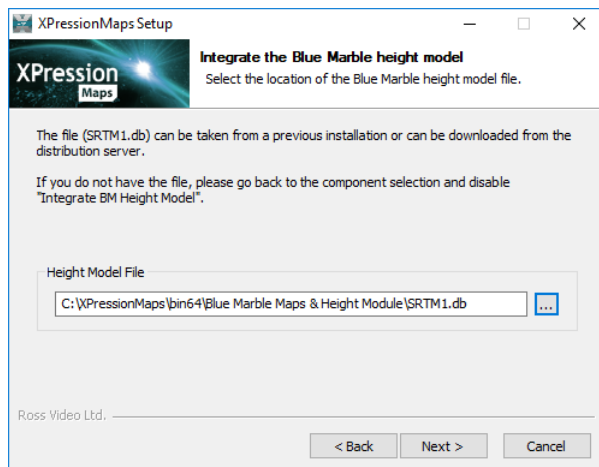
6. In the **Integrate the Blue Marble map database** page, click **Browse** to locate the **BMMap4.db** file and click **Open**.

This file must be installed from a location on the local file system as the XPression Maps system references this file to render. Typically, this file is located in the **DB** folder. If you have inadvertently deleted the file you can download it from the distribution server.



The file is added to the **Blue Marble Map File** field.

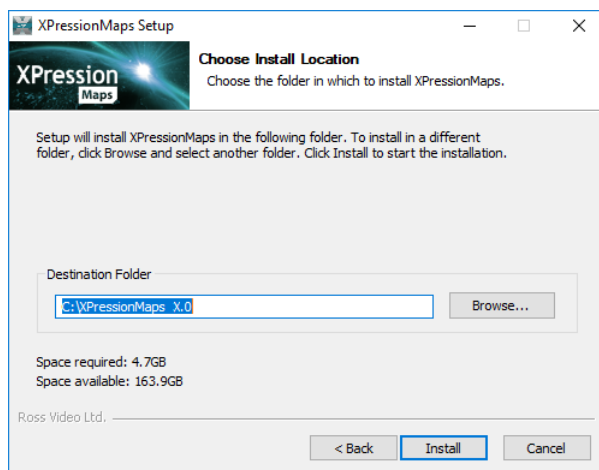
- Click **Next** and in the **Integrate the Blue Marble height model** page, click **Browse** to locate the **SRTM1.db** file and click **Open**. This file must be installed from a location on the local file system as the XPression Maps system references this file to render. Typically, this file is located in the **DB** folder.



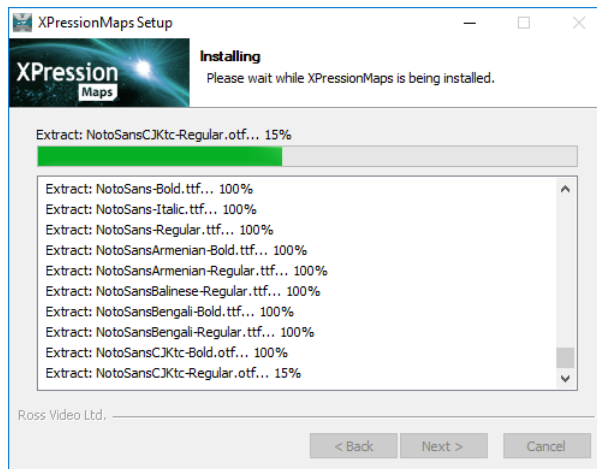
The file is added to the **Height Model File** field.

- Click **Next**.

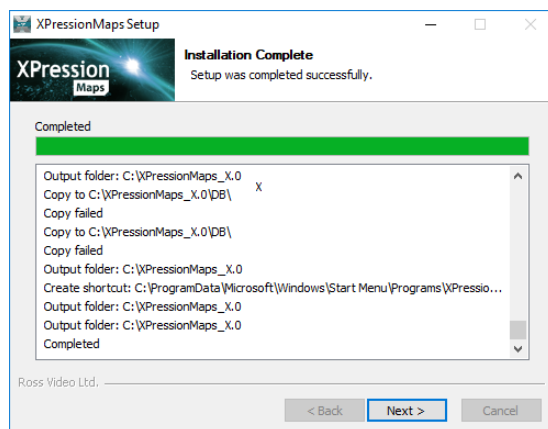
The **Choose Install Location** page opens.



- Use the default install location or click **Browse** to choose another location and click **Install**. The **Installing** page opens and the install begins.

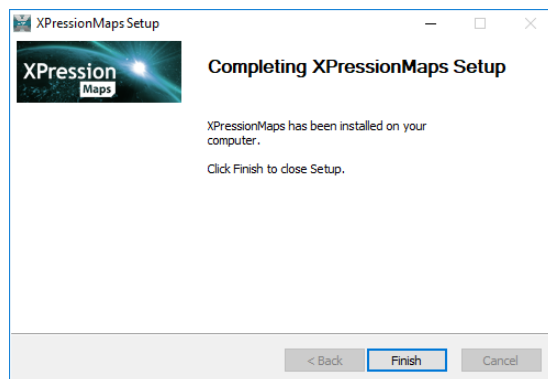


Once the installation has been successfully completed, the **Installation Complete** page opens.



- Click **Next**.

The **Completing XPression Maps Setup** page opens.



- Click **Finish** to close the **XPression Maps Setup** wizard.

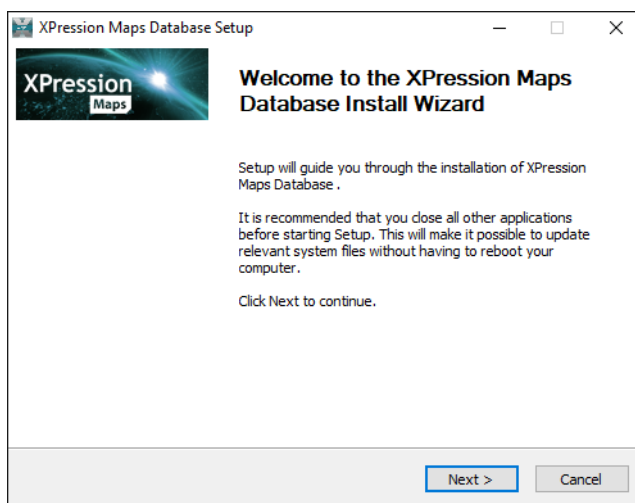
## Installing the XPression Maps Database

Install the database software if you are using XPression Maps with the XPression Newsroom Computer System (NRCS) MOS workflow or if you want to use drag and drop into XPression.

### To install the XPression Maps Database:

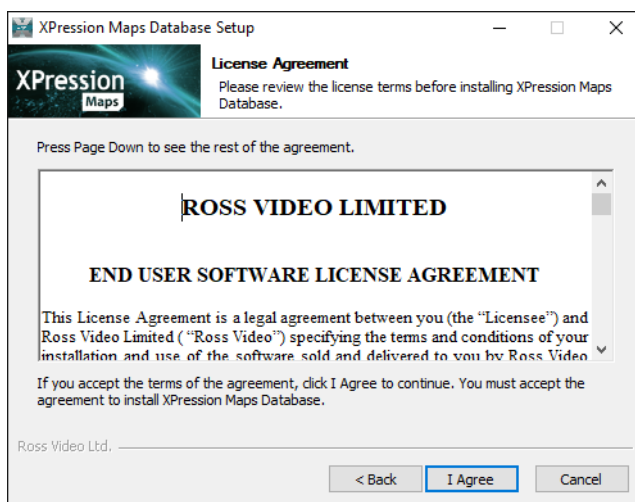
1. Open the folder where the installation files have been stored
2. Double-click **XPression Maps Database\_VX.X.X.XXXXXX\_Installer.exe**.

The **XPression Maps Database Setup** wizard opens.



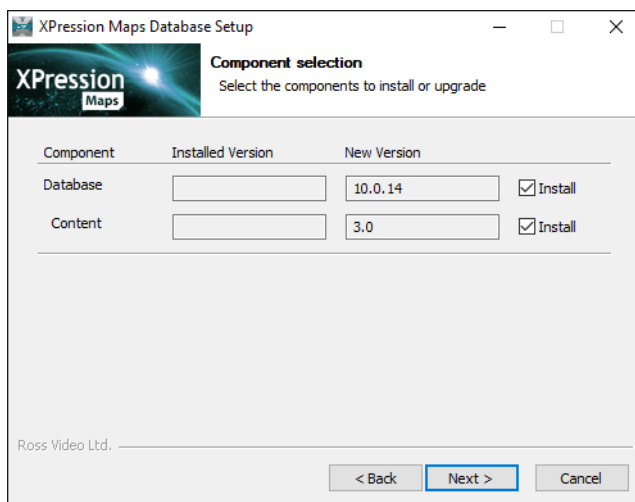
3. Click **Next**.

The **License Agreement** page opens.



4. Read the license agreement and click **I Agree**.

The **Component selection** page opens.

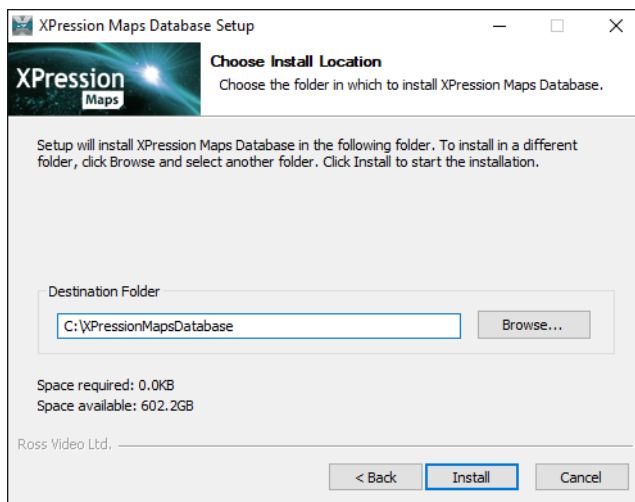


5. Ensure that the checkboxes for the following components are selected:

- **Database**
- **Content**

6. Click **Install**.

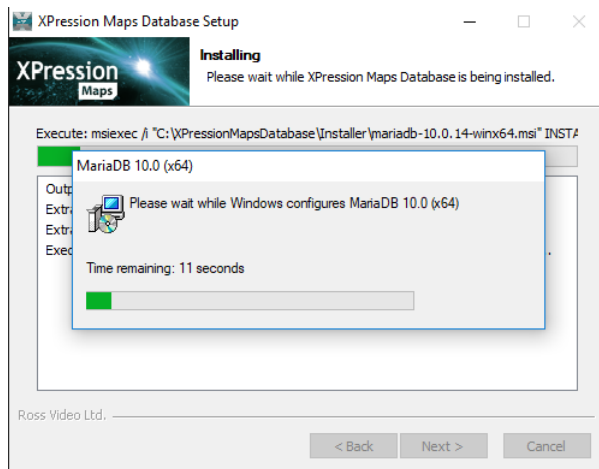
The **Choose Install Location** page opens.



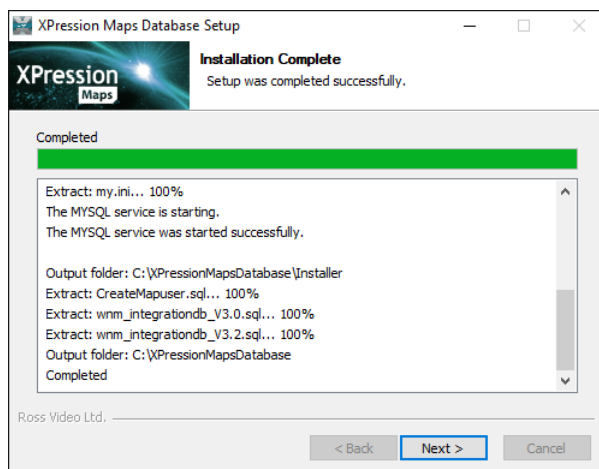
7. Use the default install location or click **Browse** to choose another location.

8. Click **Install**.

The **Installing** page opens and the install begins.



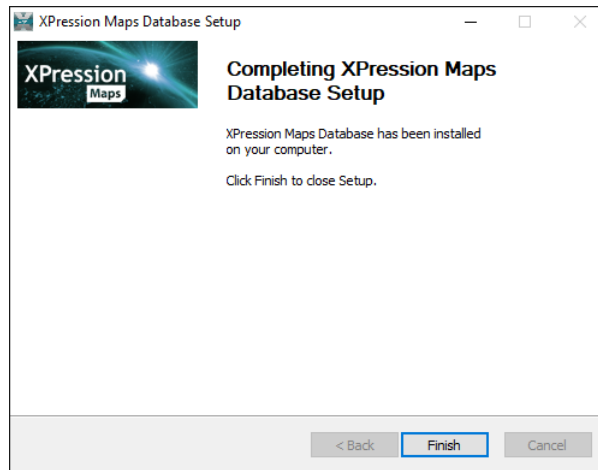
Once the install has been successfully completed, the **Installation Complete** page opens.



9. Click **Next**.

The **Completing XPressionMaps Database Setup** page opens.





10. Click **Finish** to close the **XPression Maps Database Setup** wizard.

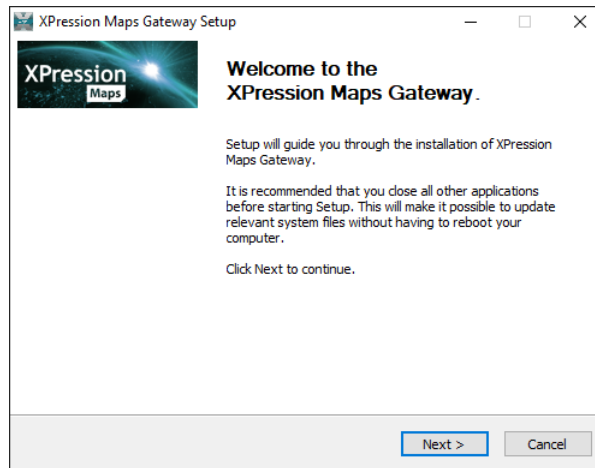
## Installing the XPression Maps Gateway

Install the XPression Maps Gateway on computers where the user will be accessing the XPression MOS or NLE client to create graphics. It can also be installed on XPression Design or Engine workstations to allow XPression Designers to add maps to their material manager or to their scenes directly.

To install the XPression Maps Gateway:

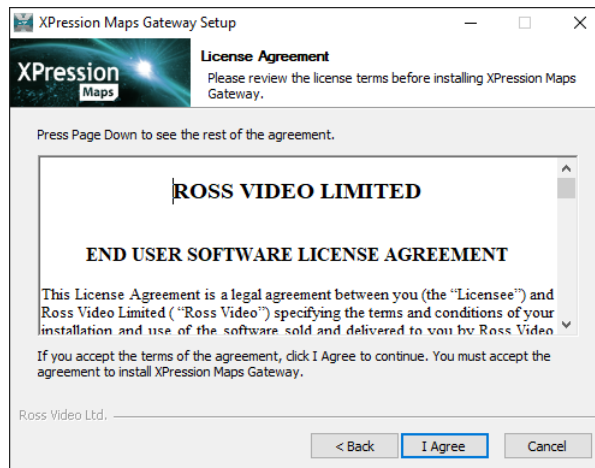
1. Open the folder where the installation files have been stored.
2. Double-click **XPression Maps Gateway\_VX.0.0.XXXXXX\_Installer.exe**.

The **XPression Maps GatewaySetup** wizard opens.



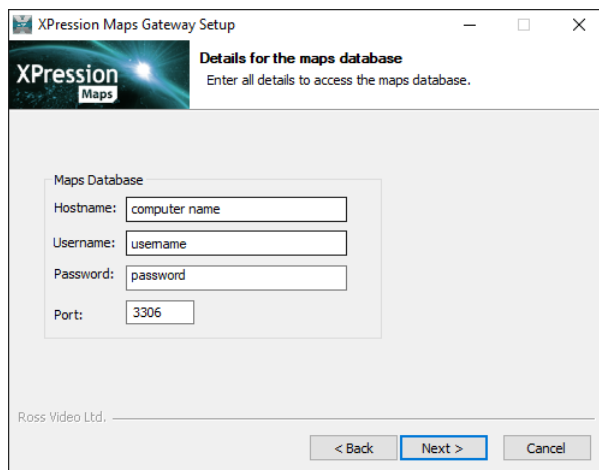
3. Click **Next**.

The **License Agreement** page opens.



4. Read the license agreement and click **I Agree**.

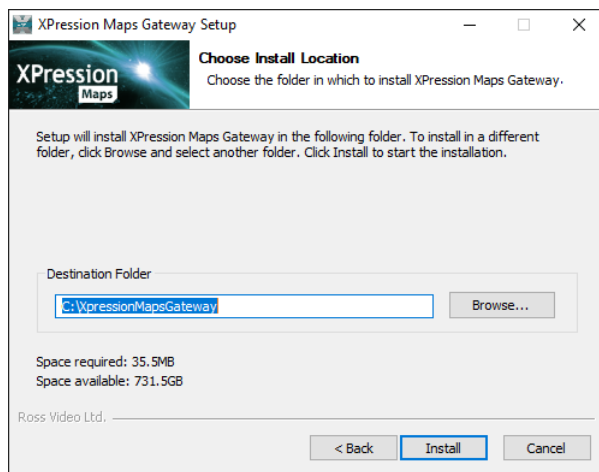
The **Maps Database Details** page opens.



5. In the **Hostname** field, enter the name of the computer on which the gateway is being installed.
6. Then enter a username and password in the appropriate fields.

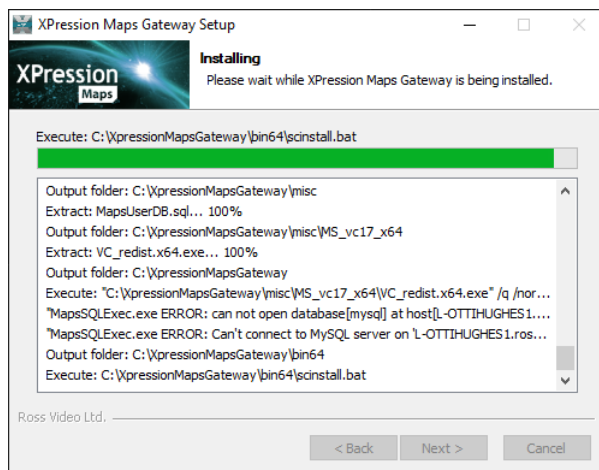
The **Port** number can remain the same.

The **Choose Install Location** page opens.

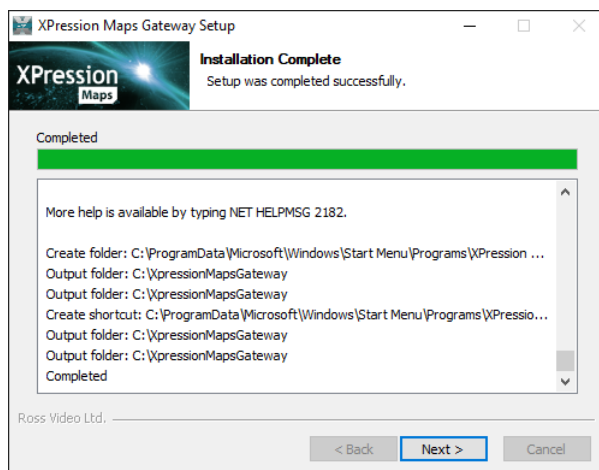


7. Use the default install location or click **Browse** to choose another location.
8. Click **Install**.

The **Installing** page opens and the install begins.



The **Completing XPression Maps Gateway Setup** page opens.



9. Click **Finish** to close the **XPression Maps Gateway Setup** wizard.

## Installing the XPression Maps License

You must contact Ross Video to obtain the license key by providing the nine-digit hexadecimal ID on your XPression dongle.

### To install the XPression Maps License:

Once you have obtained the XPression Maps license key, save it to the **C:\XPressionMaps\bin64\key** folder.

## Launching XPression Maps

The method for launching XPression Maps depends on the operating system you are running.

### To launch XPression Maps on Windows 7:

- Double-click on the XPression Maps desktop icon.


### To launch XPression maps on Windows 10:

- Right-click on the XPression Maps desktop icon and select **Run as administrator** from the shortcut menu to run the software as a local administrator.



## Launching the XPression Maps HTML5 Client

Before launching the XPression Maps HTML5 Client, verify the following:

- XPression Maps software is launched on the XPression Maps server in **Server** mode.

The XPression Maps icon  will be visible in the taskbar to task tray.

- XPression Maps Gateway is running on the XPression Maps server.

Name	Description	Status	Startup Type	Log On As
 Maps Gateway Service	The Maps G...	Running	Automatic	Local Syste...
 MessagingService -764-	Service su...		Manual (Trig...	Local Syste...

### To launch the XPression Maps HTML5 Client:

1. Open a web browser and in the URL field, enter either the XPression Maps Server host name or IP address.  
If you are using **HTTPS/SSL**, you need to use the XPression Maps Server host name.
2. In the **Username** field, enter `admin`.  
This is a temporary username. Replace this username with one of your own choosing.
3. In the **Password** field, enter `12345678`.  
This is a temporary password. Replace the this password with one that conforms to your IT policy.  
See the XPression Maps User Guide for instructions on changing usernames and passwords.
4. Click **Log in**.

## XPression Maps Port Requirements

The following diagram illustrates the port requirements for the various XPression Maps system components.



## XPression Maps Port Requirements

Revision 5

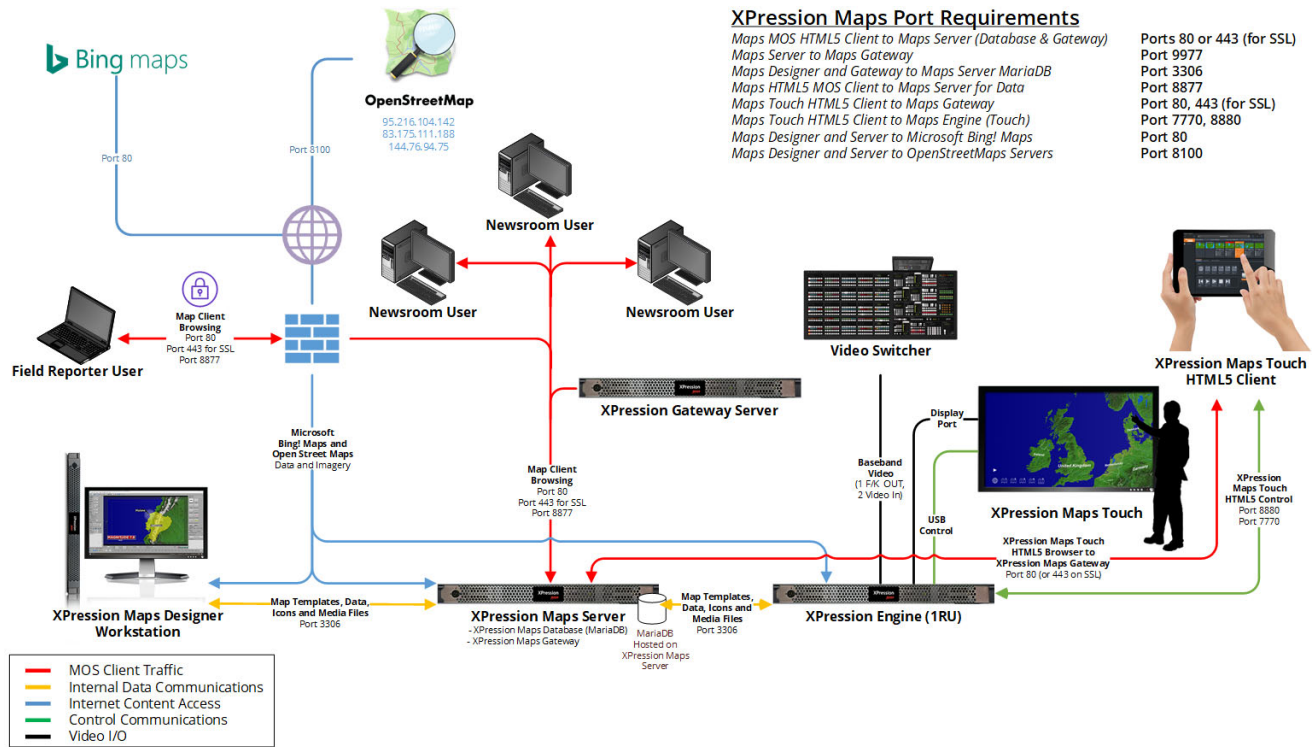


Figure 1.1 XPression Maps Port Requirements